

U-CARA® Wall Mount System

Alignment Bar

- | 38-5/8" tall (up to 7 courses of 6" fascia panels)
- | Pre-punched to accommodate both 3" & 6" panels
- | Eliminates the need to measure for rail spacing
- | Speeds up installation
- | 10 per bundle



Horizontal Rail

- | 8' long with pre-punched holes every 8"
- | Heavy duty galvanized steel
- | 10 per bundle

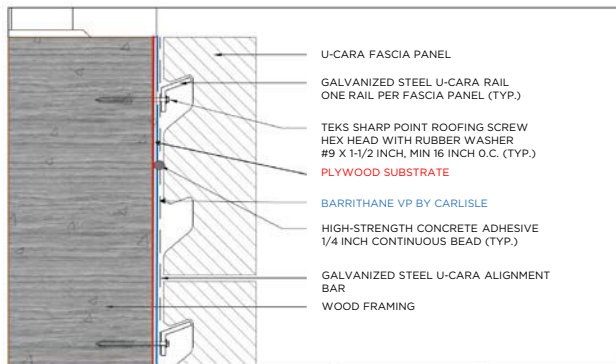


U-Cara Fascia Panels

- | EnduraColor Technology
- | Available in 4 different finishes and several colors
- | Apply adhesive and hang on wall mount system



Wood Substrate Application



CARLISLE Barrithane VP

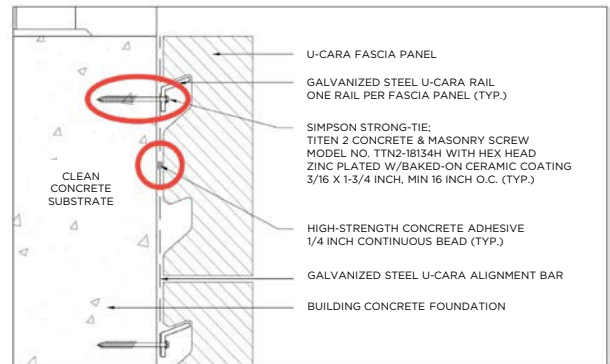
- | Damp surface tolerant
- | Immediately rain resistant
- | Single coat application
- | Apply as low as 15° F



Teks Sharp Point Roofing Screw #9 x 1-1/2"

- | Hex head
- | Rubber washer
- | Corrosion resistant coating

Concrete Substrate Application

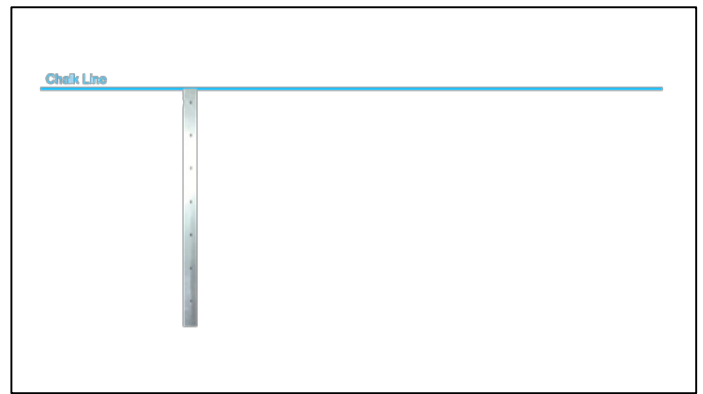


SIMPSON Strong-Tie Titen 2 Hex Head 3/16" x 1-3/4"

- | Improved thread design
- | Increased load capacity
- | Reduced snapping
- | 450+ pound tension load
- | 275+ pound shear load

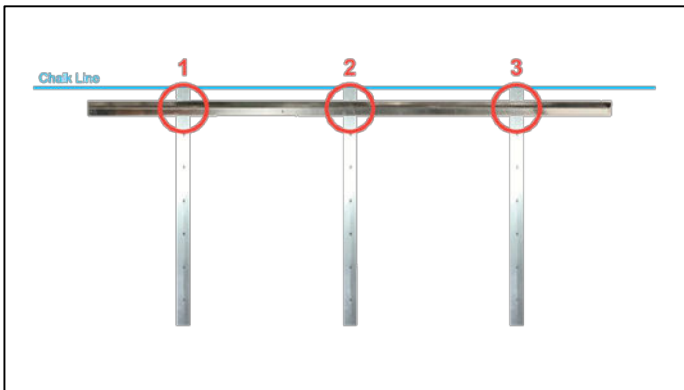


Wall Mount System Installation



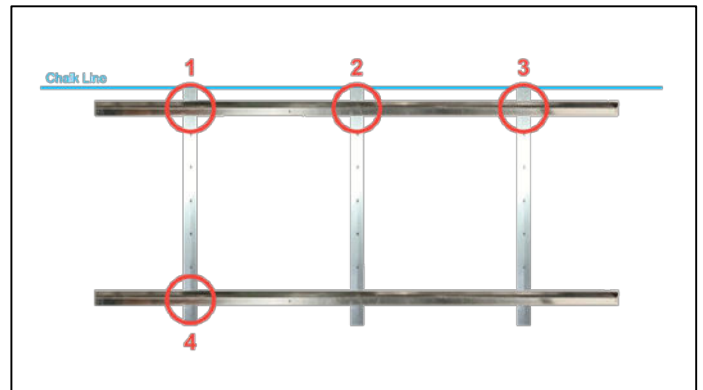
Step 1: Determine finished top height, mark with chalk line. Align orange painted end of alignment bar with chalk line.

Alignment bars should be placed 16" in from end of horizontal rail, and every 32".



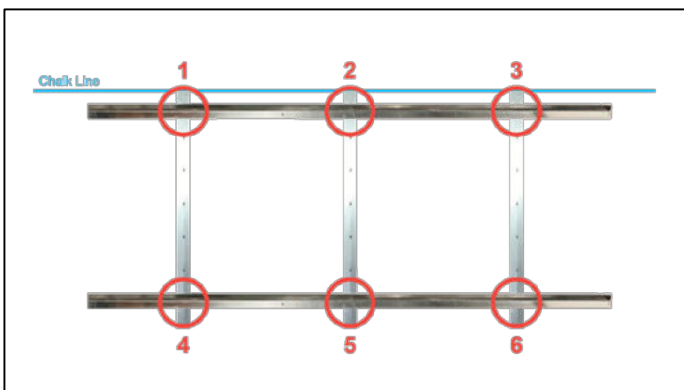
Step 2: Fasten both horizontal rail and alignment bars to substrate at points 1, 2, and 3; ensuring the rail is level.

The first four screws are the most important, as they will establish your grid pattern for all your horizontal rails in this section.

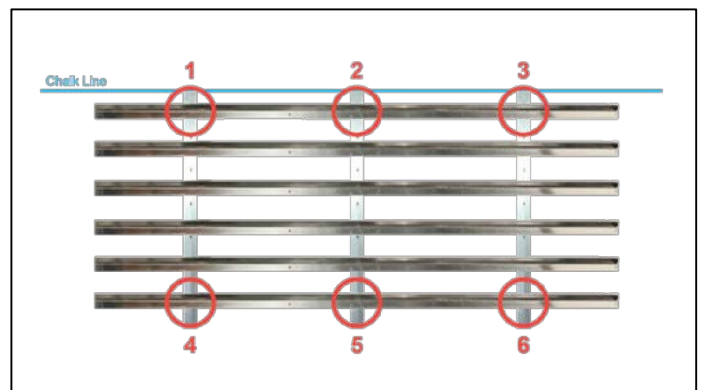


Step 3: Fasten the bottom horizontal rail and alignment bar at point 4; use a level or a square to ensure alignment bar is plumb

You have now established your grid pattern for the rest of your horizontal rails in this section.



Step 4: Fasten the bottom horizontal rail and alignment bars at points 5 and 6.



Step 5: Fasten remaining horizontal rails.

All horizontal rail should be fastened to substrate every 16" and on both ends.